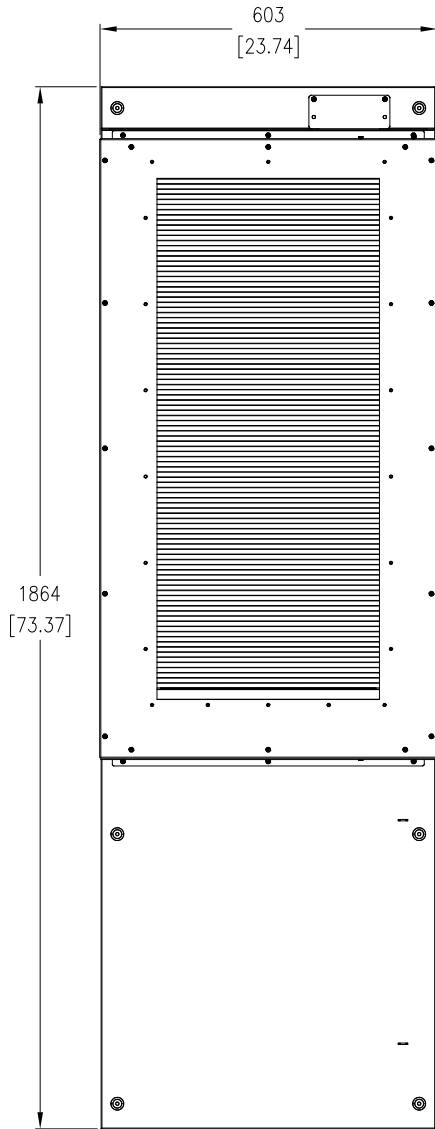
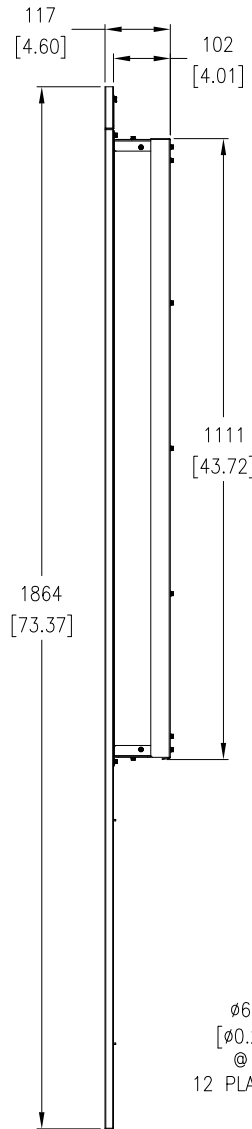


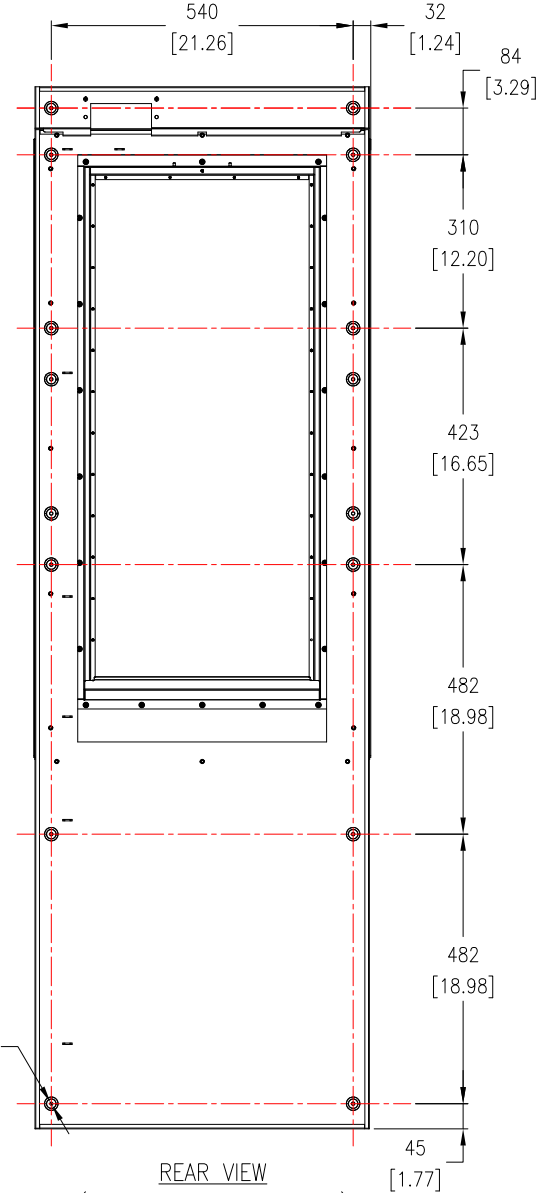
ISOMETRIC VIEW



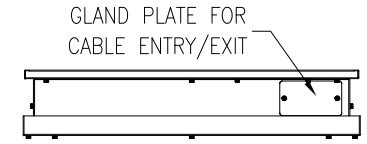
FRONT VIEW  
(REAR SIDE OF UPS)



LEFT SIDE VIEW



REAR VIEW  
(MOUNTING SIDE ON UPS)



TOP VIEW



BOTTOM VIEW

- NOTES:
- 1.INSTALLATION SHALL COMPLY WITH ALL APPLICABLE NATIONAL AND LOCAL ELECTRICAL REGULATIONS.
  - 2.REFER TO PRODUCT DOCUMENTATION FOR ADDITIONAL DETAILS PRIOR TO INSTALLATION AND SITE PREPARATION WORK.
  - 3.ALL DIMENSIONS ARE IN MILLIMETERS [INCHES] UNLESS OTHERWISE SPECIFIED.
  - 4.WEIGHT OF IP4X KIT: 26.6 kg [58.6 lb].
  - 5.COLOR: RAL 9003.
  - 6.APPLICABLE CR NUMBERS : E3MUPS60KBH AND E3MUPS80KBH

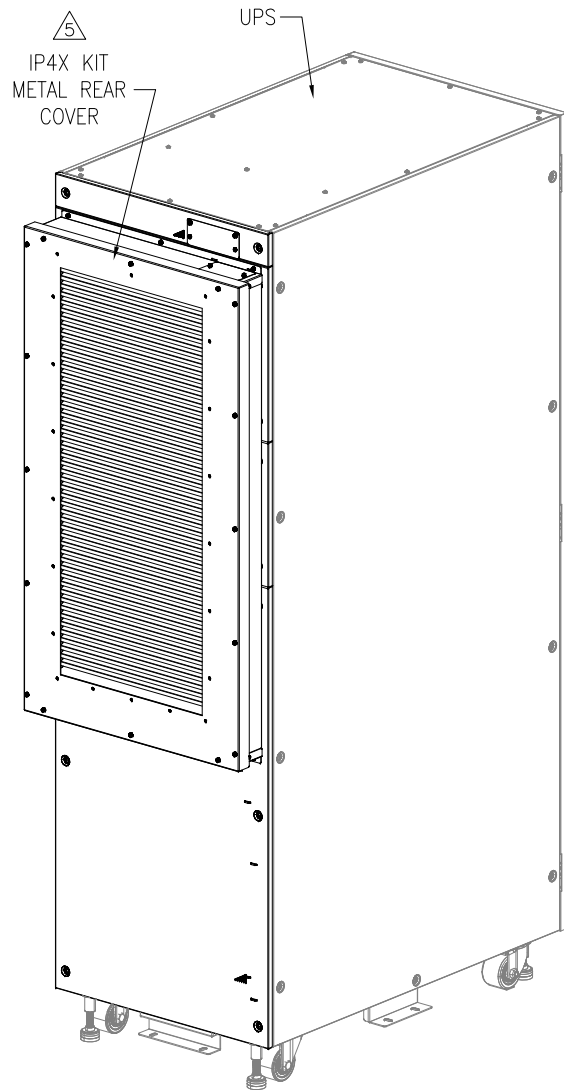
THIS DRAWING AND SPECIFICATIONS HEREIN ARE THE PROPERTY OF SCHNEIDER ELECTRIC AND SHALL NOT BE COPIED, REPRODUCED OR USED IN WHOLE OR IN PART, AS THE BASIS FOR THE MANUFACTURE OR SALE OF ITEMS WITHOUT WRITTEN PERMISSION FROM SCHNEIDER ELECTRIC. THIS DRAWING IS BASED UPON LATEST AVAILABLE INFORMATION AND IS SUBJECT TO CHANGE WITHOUT NOTICE.

**Schneider Electric**

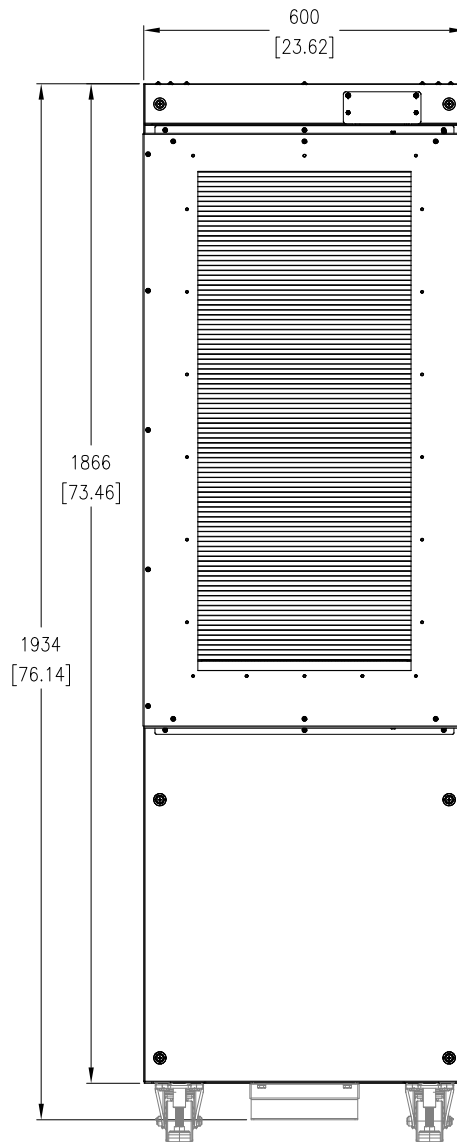
TITLE: Easy UPS 3M IP4X Kit  
For 60kVA-80kVA, 400V, UPS  
IP4X KIT - GENERAL ARRANGEMENT

PROJECT: SUBMITTAL DRAWINGS SHEET 1 OF 2

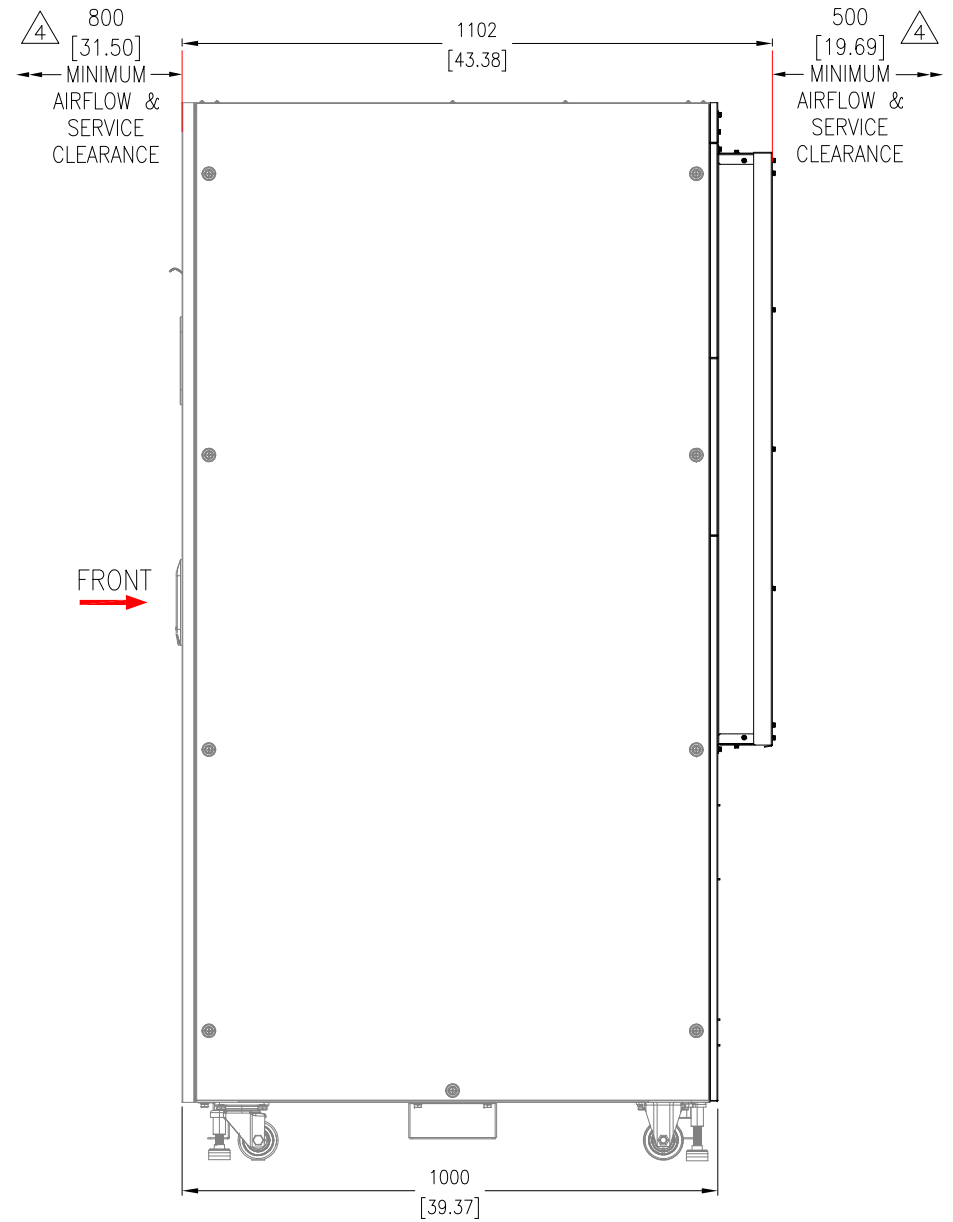
DWG NO: E3MOP017 REV. 0  
DRAWN: RANJITHA 25-OCT-23 FIRST ANGLE PROJECTION  
ENGINEER: Bosheng Zhang 19-DEC-23  
APPROVED: Sory Wang 19-DEC-23



REAR ISOMETRIC VIEW



REAR SIDE OF UPS



LEFT SIDE VIEW

- NOTES:
- 1.INSTALLATION SHALL COMPLY WITH ALL APPLICABLE NATIONAL AND LOCAL ELECTRICAL REGULATIONS.
  - 2.REFER TO PRODUCT DOCUMENTATION FOR ADDITIONAL DETAILS PRIOR TO INSTALLATION AND SITE PREPARATION WORK.
  - 3.ALL DIMENSIONS ARE IN MILLIMETERS [INCHES] UNLESS OTHERWISE SPECIFIED.
  - 4.FRONT AND REAR CLEARANCE ARE FOR AIRFLOW AND SERVICE ACCESS. CONSULT WITH THE LOCAL SAFETY CODES AND STANDARDS FOR ANY ADDITIONAL REQUIREMENTS OF LOCAL AREA.
  - 5.FOLLOW THE INSTRUCTIONS IN MANUAL FOR INSTALLATION OF IP4X KIT.
  - 6.PROTECTION CLASS: IP4X.

THIS DRAWING AND SPECIFICATIONS HEREIN ARE THE PROPERTY OF SCHNEIDER ELECTRIC AND SHALL NOT BE COPIED, REPRODUCED OR USED IN WHOLE OR IN PART, AS THE BASIS FOR THE MANUFACTURE OR SALE OF ITEMS WITHOUT WRITTEN PERMISSION FROM SCHNEIDER ELECTRIC. THIS DRAWING IS BASED UPON LATEST AVAILABLE INFORMATION AND IS SUBJECT TO CHANGE WITHOUT NOTICE.

**Schneider**  
**Electric**

TITLE:  
Easy UPS 3M IP4X Kit  
For 60kVA-80kVA, 400V, UPS  
TYPICAL ARRANGEMENT - WITH UPS

PROJECT: SUBMITTAL DRAWINGS SHEET 2 OF 2

DWG NO:	E3MOPT017	REV.	0
DRAWN:	RANJITHA	25-OCT-23	FIRST
ENGINEER:	Bosheng Zhang	19-DEC-23	ANGLE
APPROVED:	Sory Wang	19-DEC-23	PROJECTION